

Taiheiyo Cement Group's Road Surface Repair Technology

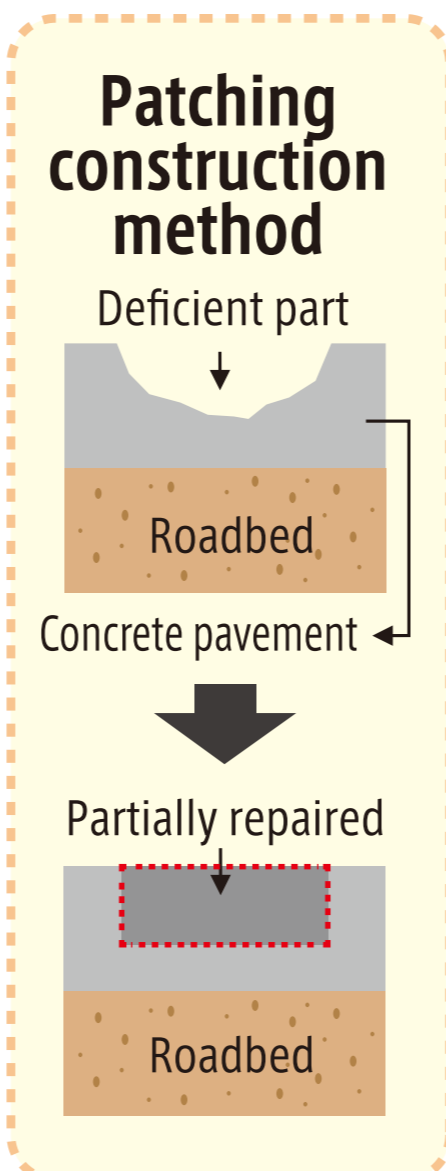
다이헤이요시멘트그룹의 포장 보수 기술

Patching construction method

Pothole repairs



Ultra fast-setting polymer cement mortar
Taiheiyo Rubber Latex Mortar
 Taiheiyo Materials Corporation



Applications

Concrete slab surface repairs
 Concrete slabs in warehouses and factories
 Repairs to flooring concrete in parking lots

Features

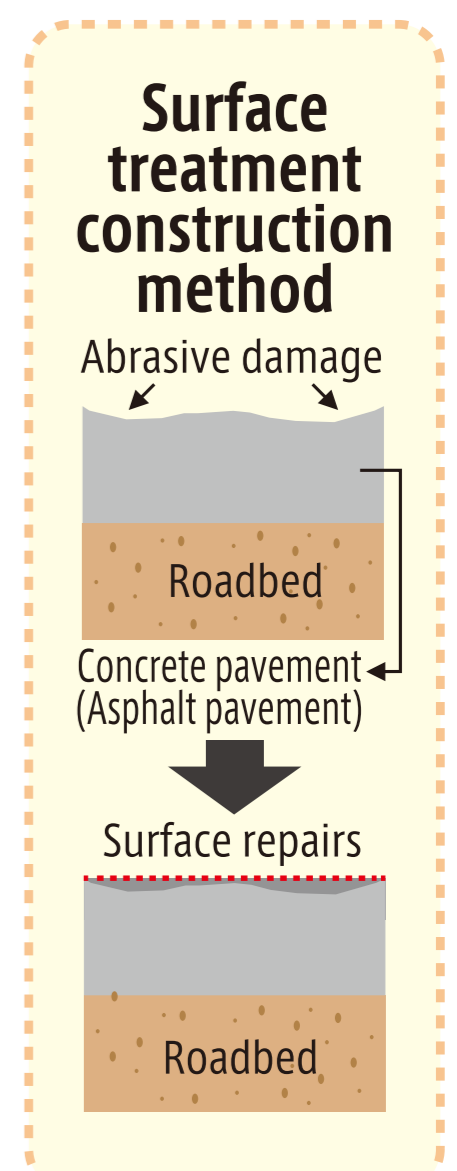
Outstanding fast setting performance and compressive strength
 Minimal shrinkage to ensure maintenance of dimensional stability
 High adhesion to structural materials
 High waterproof performance

Surface treatment construction method

Repair of surface layer abrasive degradation



Simple ultra-fast setting polymer cement repair material
Chichibu Cleat Box P
 Chichibu Concrete Industry Co., Ltd.



Applications

Filling holes or repairing unevenness on asphalt or concrete paving surfaces

Features

With fluidity to facilitate construction work
 Fast reopening to traffic
 Good contouring with base material to realize peel resistance
 No primer required
 Simple construction with no need for concrete mixing tools

Existing pavement replastering method

Covered for 3 hours



Ultra-fast setting concrete
Super Jet Concrete
 Onoda Chemico Co., Ltd.

Applications

Emergency construction
 Machine foundations
 Sign foundations
 Telescoping devices
 Filling
 Guard rail foundations
 Concrete deficient cross section and slab repairs
 Piping and wiring construction backfilling

Features

Easily manufactured on site
 Possible to manufacture only the quantity required to prevent waste
 Handling time easily adjustable
 Promotes long-term stable strength

Covered for 12 hours



Fast setting concrete admixture
Facet

Applications

Parts requiring high compressive strength for material ages of 6 - 12 hours to reduce construction times or for emergency construction

Features

Manifestation of outstanding initial strength
 Allows working time of one hour or more
 Manufacture of fast setting concrete
 Compatible with all kinds of concrete

