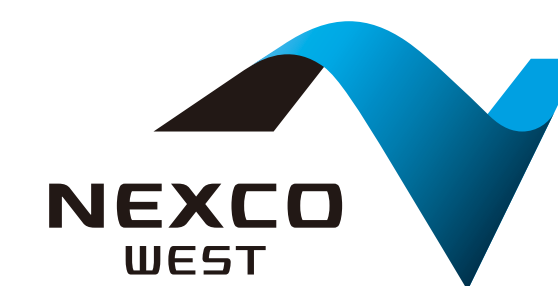


Expressway Network in Japan

일본 고속도로 네트워크

Japan's Expressways are built and operated by six companies.
The total length in operation is 9,949km, and 641km is under construction.



Company Name: West Nippon Expressway Co., Ltd.
 Head Office: Osaka
 Expressways in Operation: 3,453km
 Traffic Volume: 2.71million vehicles/day
 Toll Revenue: US\$ 6.0 billion
 Expressway under construction: 102km



Company Name: Hanshin Expressway Company Limited
 Head Office: Osaka
 Expressway in Operation: 259.1km
 Traffic Volume: 0.74 million vehicles/day
 Toll Revenue: US\$ 1.6 billion
 Expressway under Construction: 13.9km

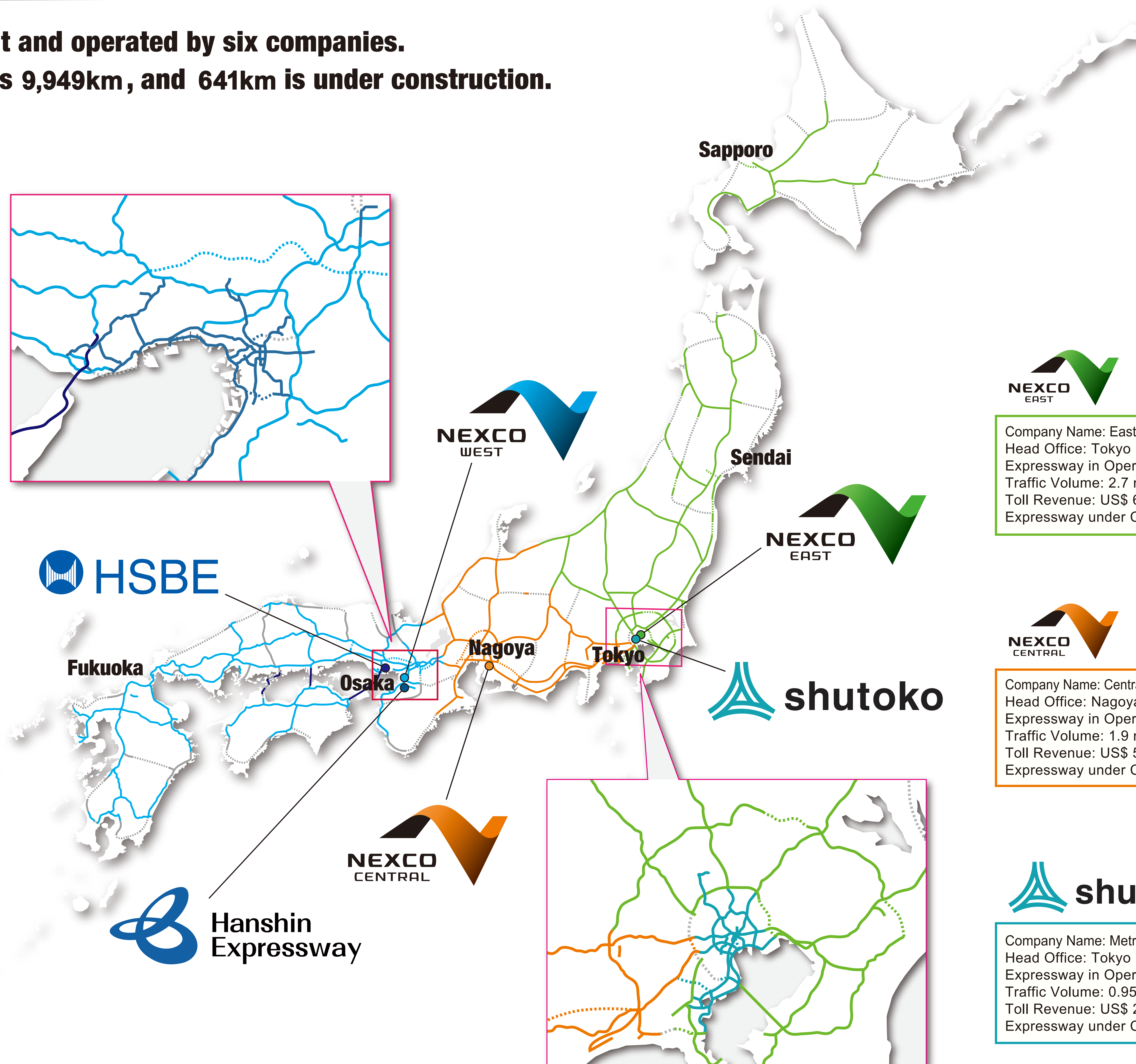


Company Name: Honshu-Shikoku Bridge Expressway Company Limited
 Head Office: Kobe
 Expressway in Operation: 172.9km
 Traffic Volume: 0.11million vehicles/day
 Toll Revenue: US\$ 0.5 billion



———— In operation
 Under construction

As of November 1st, 2015
 Note: Revenue is for year ended March 31, 2015 and calculated by the exchange rate of 120 JPY for 1 US\$



Company Name: East Nippon Expressway Co., Ltd.
 Head Office: Tokyo
 Expressway in Operation: 3,831km
 Traffic Volume: 2.7 million vehicles/day
 Toll Revenue: US\$ 6.5 billion
 Expressway under Construction: 156km



Company Name: Central Nippon Expressway Co., Ltd.
 Head Office: Nagoya
 Expressway in Operation: 2,007km
 Traffic Volume: 1.9 million vehicles/day
 Toll Revenue: US\$ 5.3billion
 Expressway under Construction: 265km



Company Name: Metropolitan Expressway Co., Ltd.
 Head Office: Tokyo
 Expressway in Operation: 310.7 km
 Traffic Volume: 0.95 million vehicles/day
 Toll Revenue: US\$ 2.1 billion
 Expressway under Construction: 18.9 km