

Permanent Asphalt / Concrete Repair Solution

حل الإصلاح الدائم للأسفلت / الخرسانة

AQUA Patch is a cold-mix, permanent repair solution for asphalt and concrete applications that reacts with water to harden quickly, being traffic-ready within just one hour. The proprietary hardening agent is environmentally friendly and renewable.

AQUA PATCH

Save money by eliminating repeat repairs!

Fast - Hardens in 1 hour (traffic-ready)

Easy - Just add water

Safe - Environmentally friendly

Permanent - As hard as hot mix asphalt

Convenient - Use in Winter or Summer, rain or shine!



Doing the job right – the first time, is now faster and easier than ever!

AQUA Patch saves time and money while delivering a superior, permanent repair to asphalt and concrete surfaces. This cold-mix, water-activated product is environmentally friendly. It sets up quickly and is traffic-ready in just one hour.

Unlike other asphalt patching solutions, AQUA Patch provides a permanent solution, using revolutionary organic renewable additives, so you don't have to continually repair the same trouble spot, or replace a temporary fix with a permanent solution.

Don't let weather interfere with your production schedule. You can use AQUA Patch all year round, in all types of weather, hot or cold, wet or dry. Rain and moisture helps accelerate the process.

AQUA Patch is traffic-ready within just one hour after compaction, so road repairs don't tie up traffic as long.

Applications

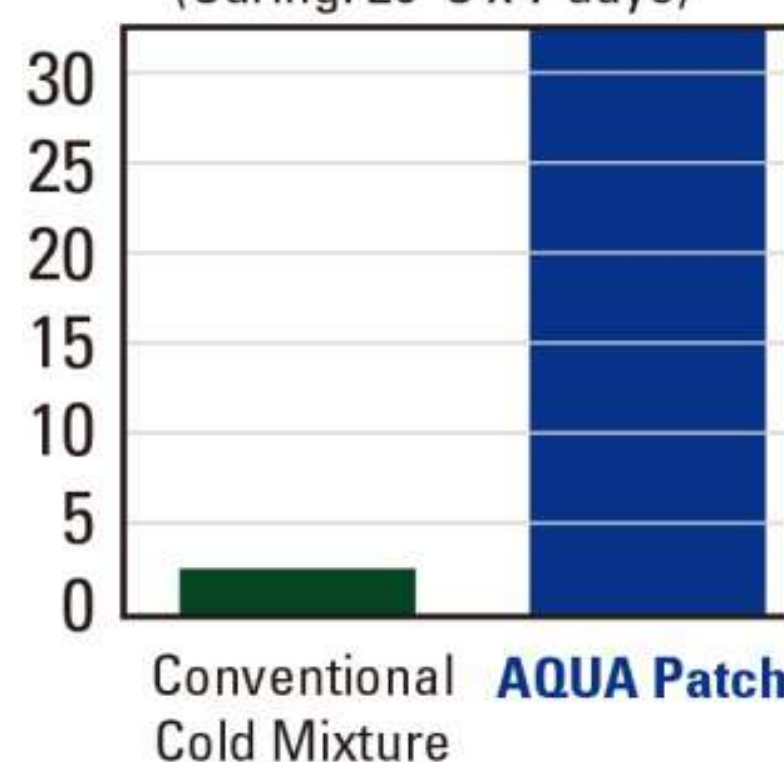
- ◆ Asphalt road patching
- ◆ Concrete road repairs
- ◆ Pothole repairs
- ◆ Driveways, walkways and parking lots
- ◆ Utility cuts and manhole repairs
- ◆ Bridge joints

Benefits

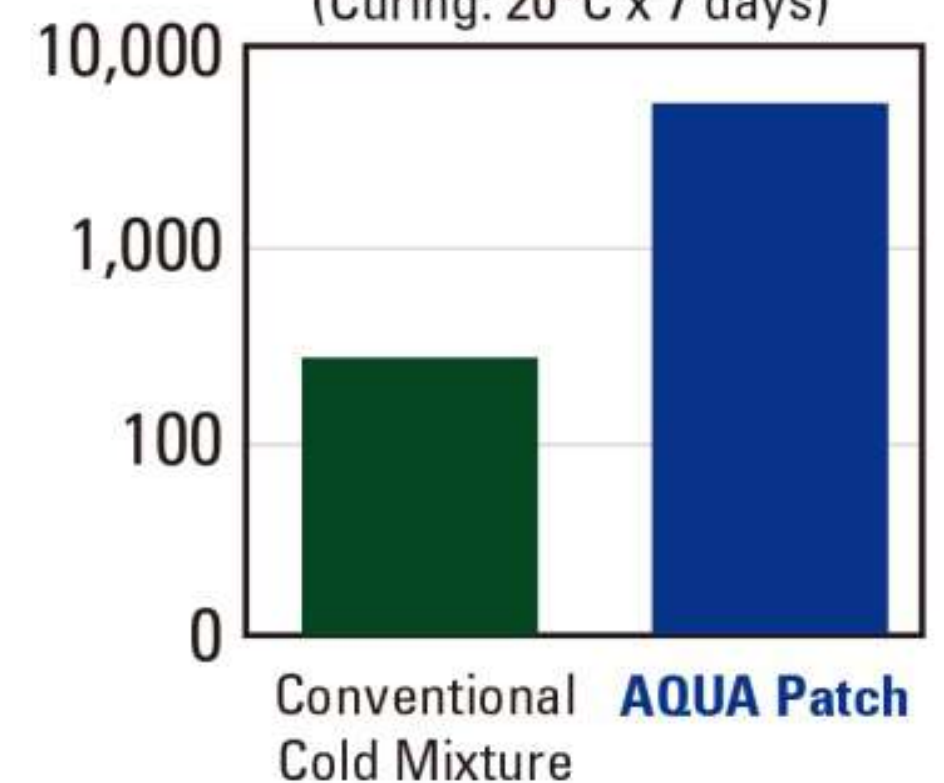
- ◆ Easy - pour, add water and tamp
- ◆ Durable - as hard as hot mix asphalt
- ◆ Fast & hard - traffic-ready in just 1 hour
- ◆ Saves money - eliminates repeat repairs
- ◆ Environmentally friendly
- ◆ Can be sealed with a seal coat immediately after one hour cure.

As hard as hot mix asphalt

Marshall Stability Test
(Curing: 20°C x 7 days)



Wheel Tracking Test
(Curing: 20°C x 7 days)



Please contact JALUX Inc. for any inquiries.
JALUX Inc. (Sales Agent)
E mail: aquapatchasphalt@jalux.com
Website: <https://www.aquapatchasphalt.com>

MAEDA CORPORATION
<https://www.maeda.co.jp/english.html>

 **MAEDA ROAD**

Easily installable bump-eliminating compound: "SMART PATCH"

مادة إصلاح فروق المستوى بسهولة

Product overview

Smart Patch is a road surface repair compound that uses a fast-curing polymer cement material. It works well in eliminating joint bumps, keeping aggregates in place in level-difference correction patches, and renovating worn-down road surfaces. The product is available in black or natural color (cement color).

Advantages

Durability: The product offers excellent durability as well as good bonding with pre-installed pavement.

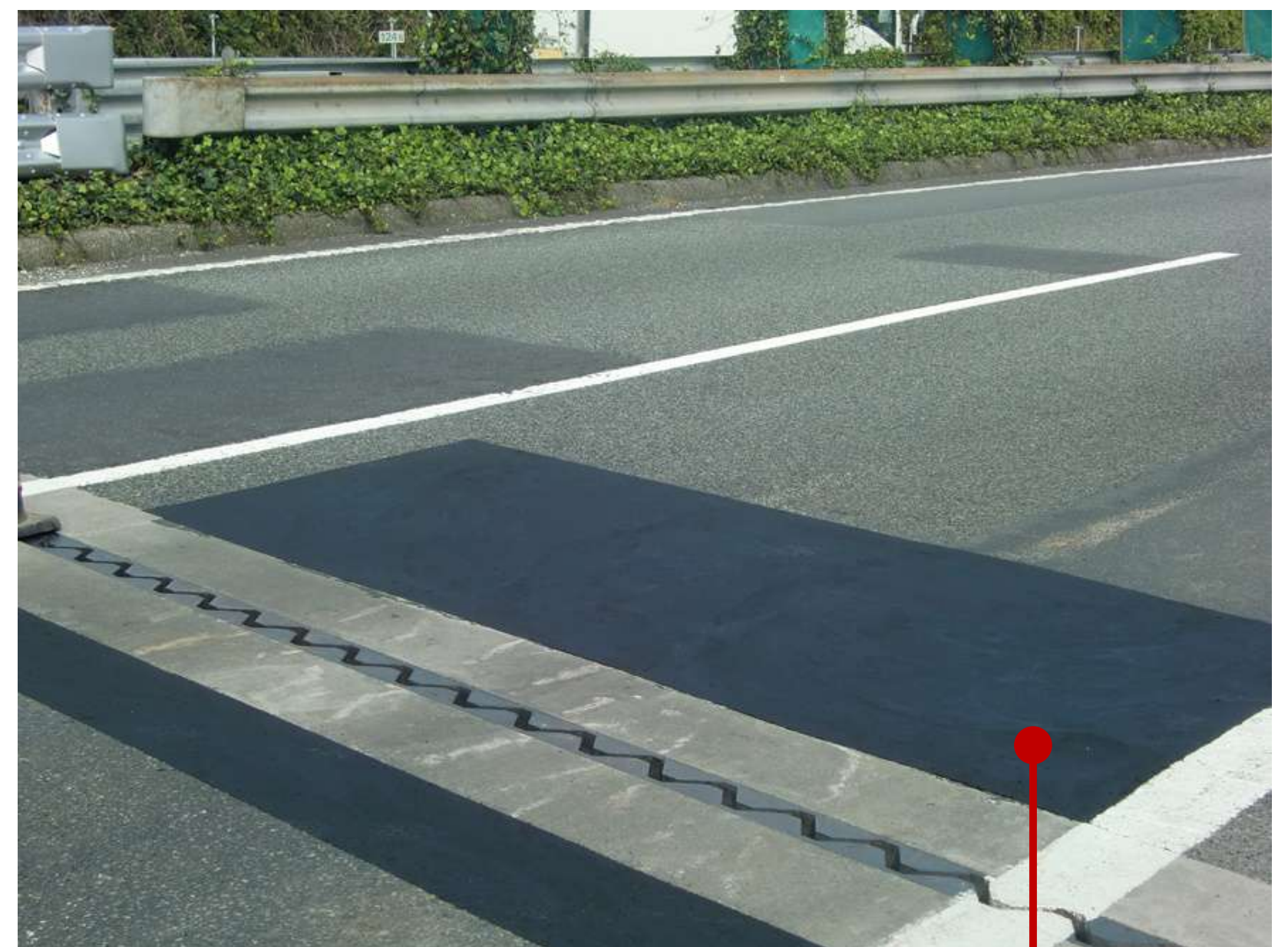
Safety: The surface exhibits superb skid resistance.

Economy: The small-volume package helps eliminate waste.

Comfortability: Less unpleasant odor than conventional resin-based repair compounds.

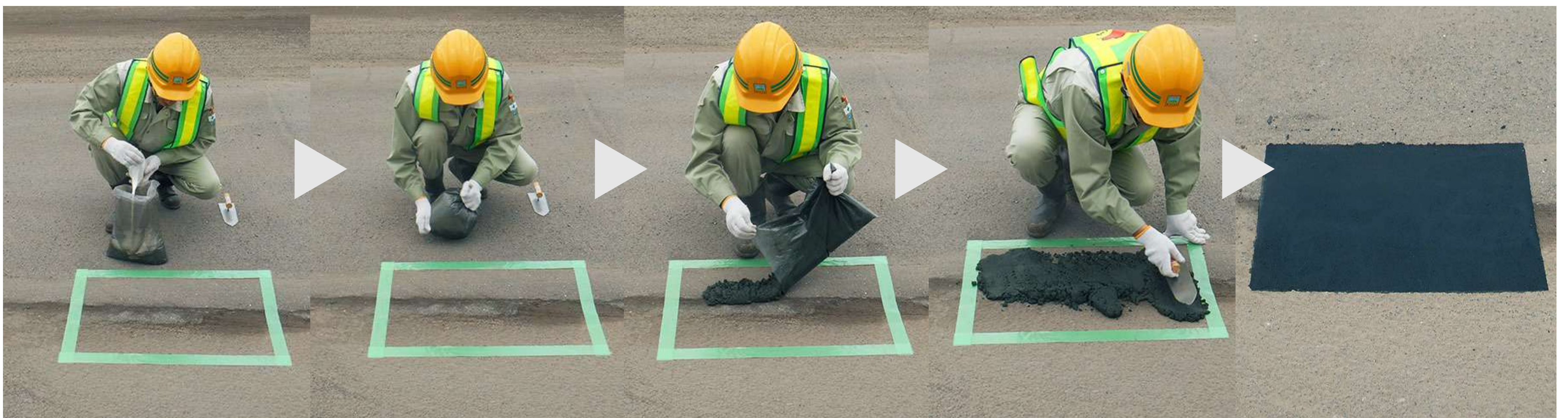


Bumps can be easily plastered over with a trowel.



Smoothly patched surface is achieved with good aggregate retention.

Installation steps



- ① Add resin to powder.
- ② Knead them together by hand to mix thoroughly.
- ③ Pour the mixture over the bump.
- ④ Level the surface with a trowel.
- ⑤ Finished

Package content



4 sets in one box



One set

Cold-setting crack filler: "MD SEAL"

مادة حقن خاصة بالتشققات تتصلب بدرجة الحرارة المحيطة

Product overview

"MD Seal" is a crack filler that cures when the main agent, a special asphalt emulsion, is mixed with the curing agent. It can be installed at room temperature and hardens speedily.

Advantages

- ◆ The mixture will remain workable for approximately ten minutes and has superior permeability, dependably reaching deep into the back of fine cracks.
- ◆ The main agent is an asphalt emulsion-based material that has strong adhesiveness and bonds well with damaged or cracked pre-installed pavement.
- ◆ The cured mixture is very tough and dependably conforms to expansions and contractions in the pavement.
- ◆ The mixture cures in approximately sixty minutes and will be quickly ready for traffic.

Adhesiveness

MD Seal bonds well with pre-installed pavement and has tensile adhesiveness that is four times as strong as that of hot-setting sealing compounds.

MD Seal can also be used for repairing cracks in concrete pavements.

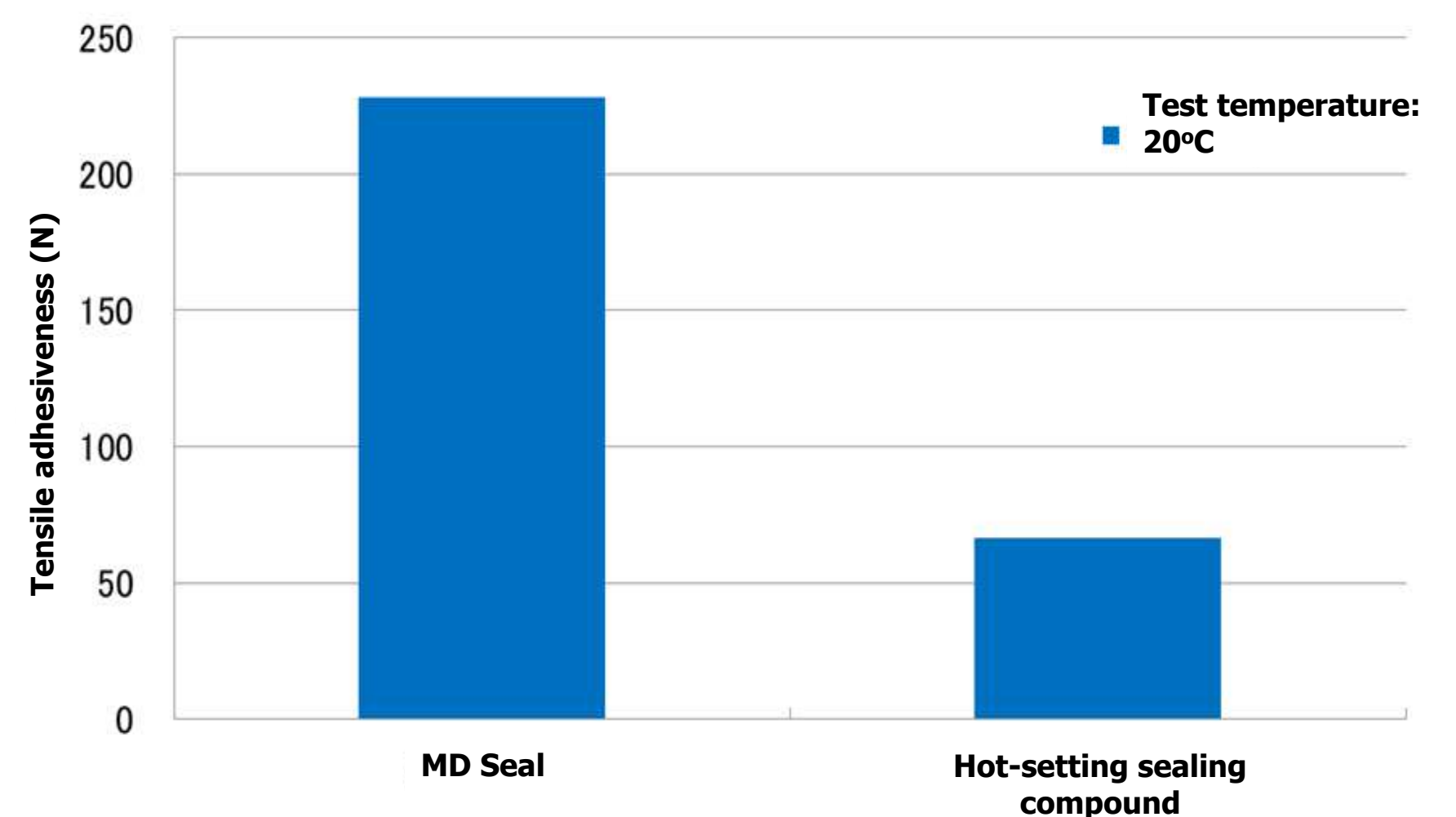
Main agent



Curing agent



One set of MD Seal: 350 g
20 sets are packed in one box.



Tensile adhesiveness test result

Trial installation

Location: Apron in Yangon International Airport

Installation date: February 1, 2018

Ready for traffic in **one hour** after installation.

Installation area: 10 mm wide, 10 m long

Air temperature on site: 32°C



Before installation



Applying the filler



After installation